

Miller AugmentedArc™ Software Upgrade Instructions



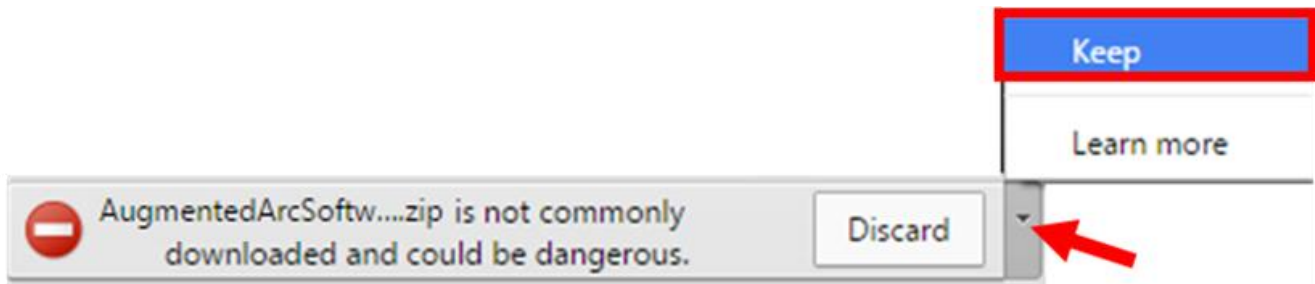
CONTENTS

Step 1: Download the Software Update Files to a USB Drive	2
Unzip with Windows Explorer.....	3
Unzip with WinZip.....	5
Step 2: Install the Latest Teacher Software on Your PC.....	7
Step 3: Install the Latest Simulator Software on the Simulator.....	9
STANDALONE MODE.....	9
CLASSROOM MODE.....	11
Step 4: Verifying the Software Update	12

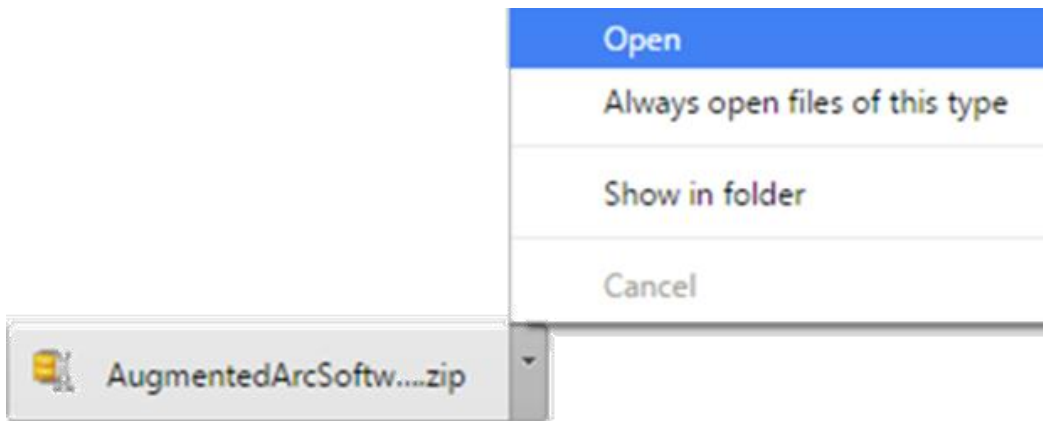
Step 1: Download the Software Update Files to a USB Drive

Use a web browser (*Google Chrome is recommended*) to download the latest software update file (**AugmentedArcSoftwareV1_3_0.zip**) from this location: <https://www.millerwelds.com/support/system-setup-and-software/augmentedarc-software> (on the website, click on [Download Latest Software Update >>](#))

After the download completes, if you see any warning messages like this, then select the arrow tab and then select “Keep”.



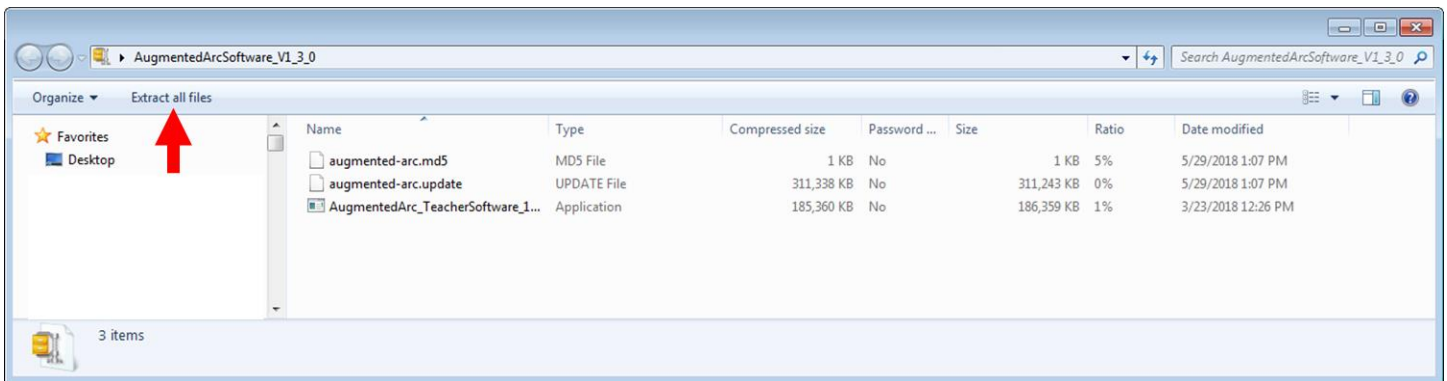
Open the downloaded file – **AugmentedArcSoftwareV1_3_0.zip**.



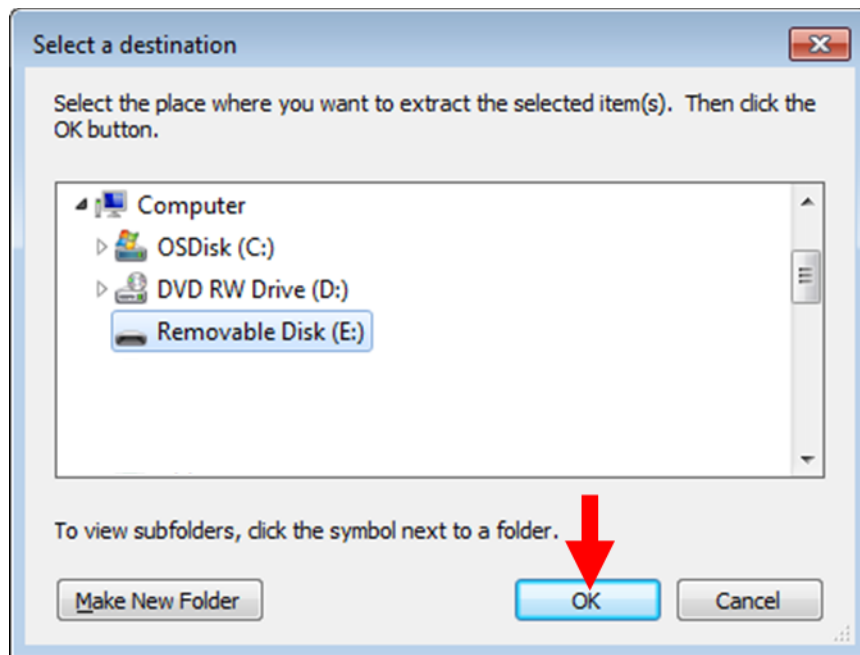
Use a file unzipping utility to unzip and extract the contents to an empty USB drive. There are different ways to do this. The following pages show two common methods – using Windows Explorer and using WinZip.

Unzip with Windows Explorer

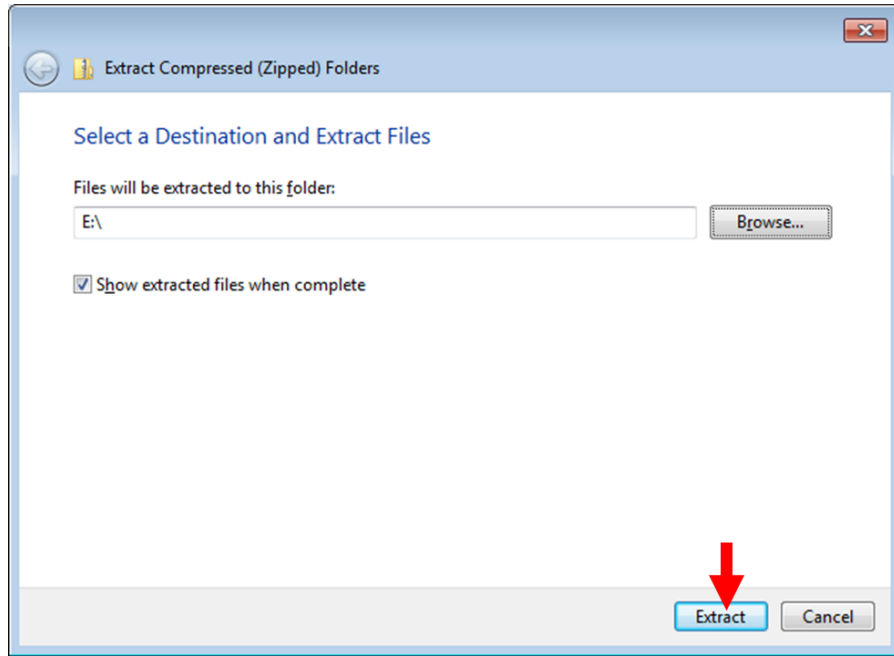
If using the default Windows Explorer unzipping utility, select **“Extract all files”**.



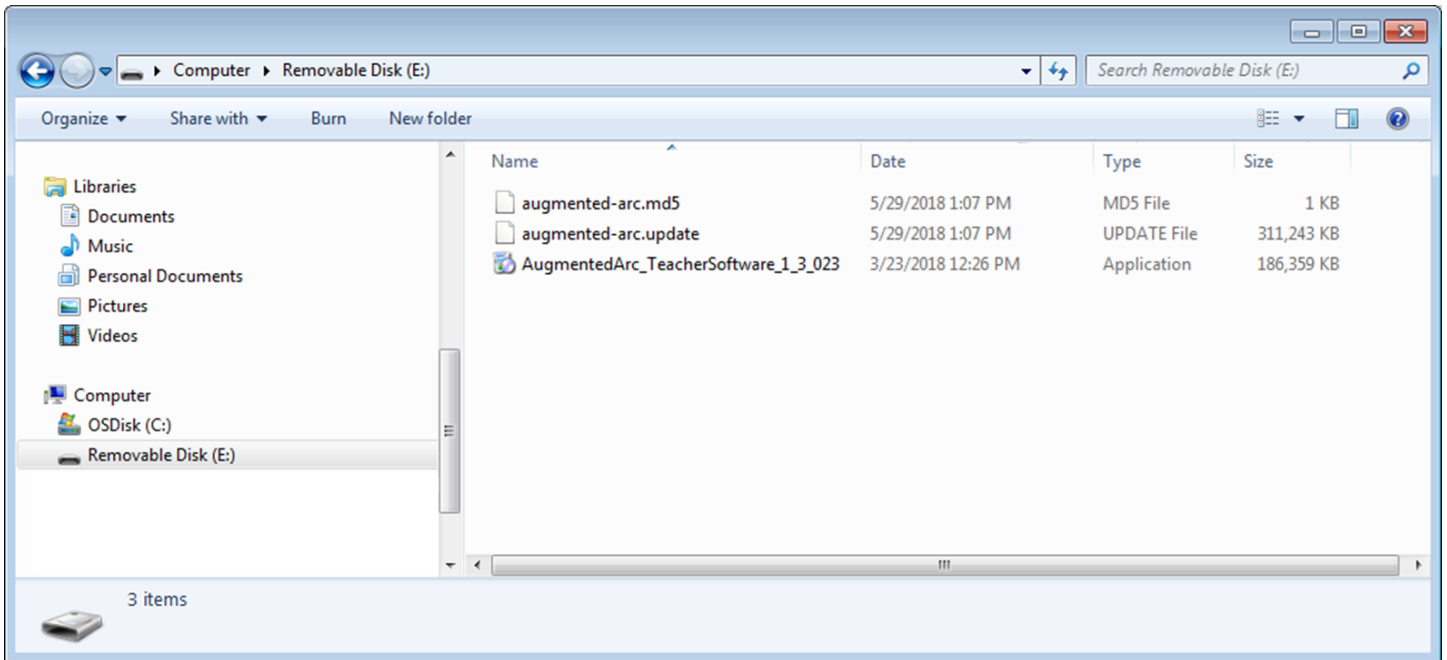
Select the USB drive location and then select **“OK”**. *Note: The letter of the drive may differ based on your computer.*



Select **“Extract”**. The extraction process will then begin and may take a few minutes.

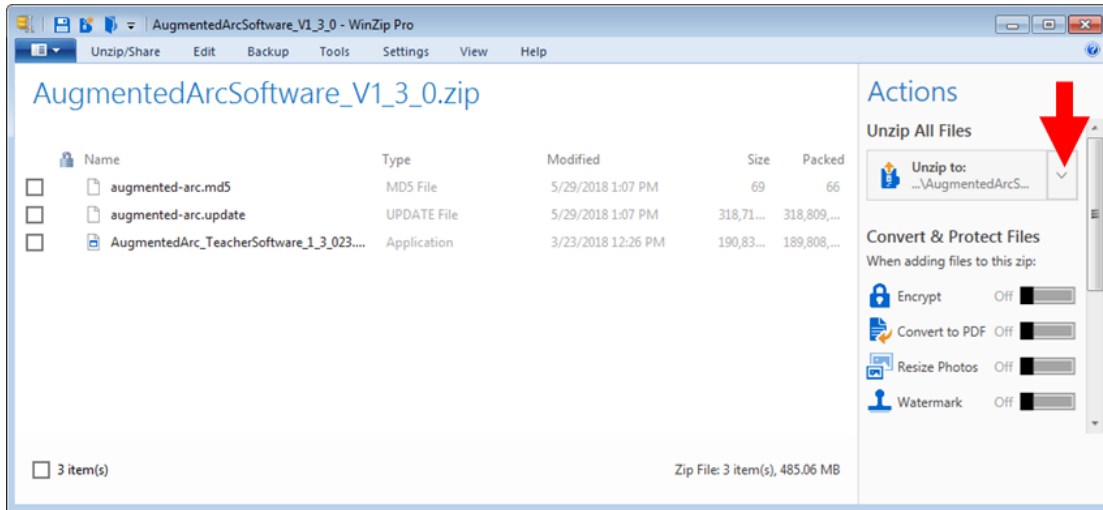


The USB drive will then contain 3 files as shown below:

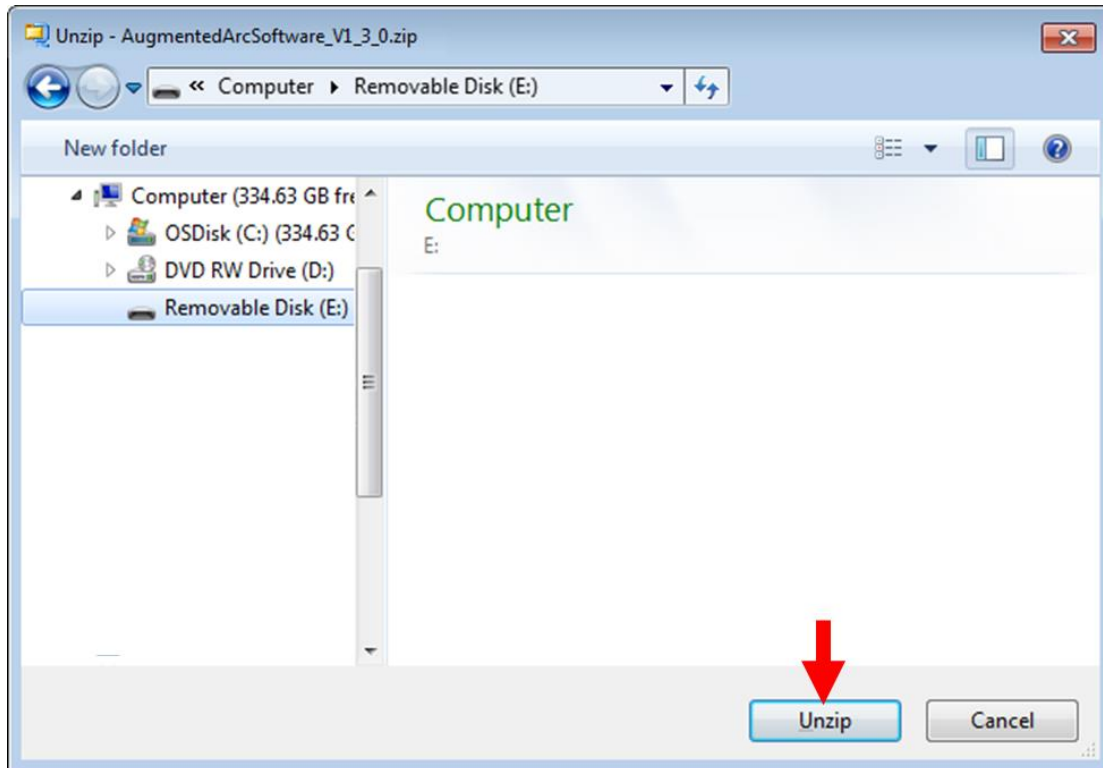


Unzip with WinZip

If using WinZip, select the “**Unzip to:**” drop-down button.

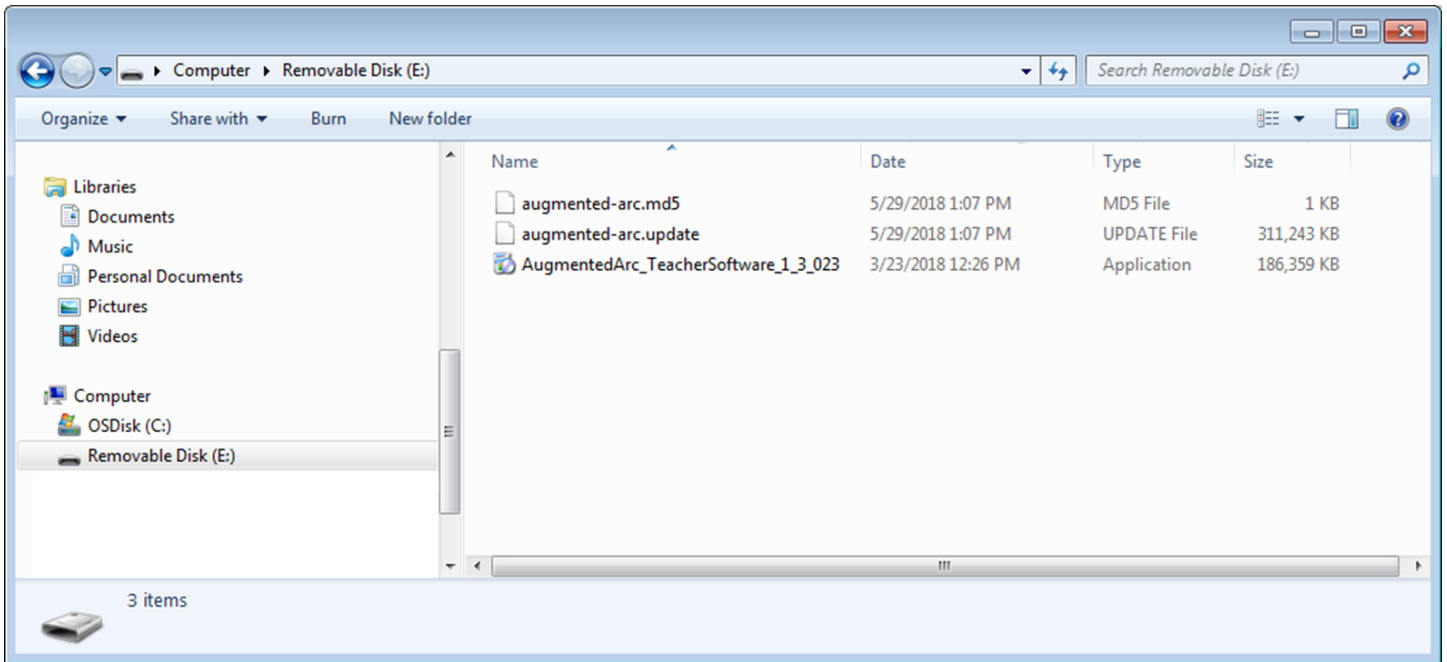


Select the USB drive location and then select “**Unzip**”. *Note: The letter of the drive may differ based on your computer.*



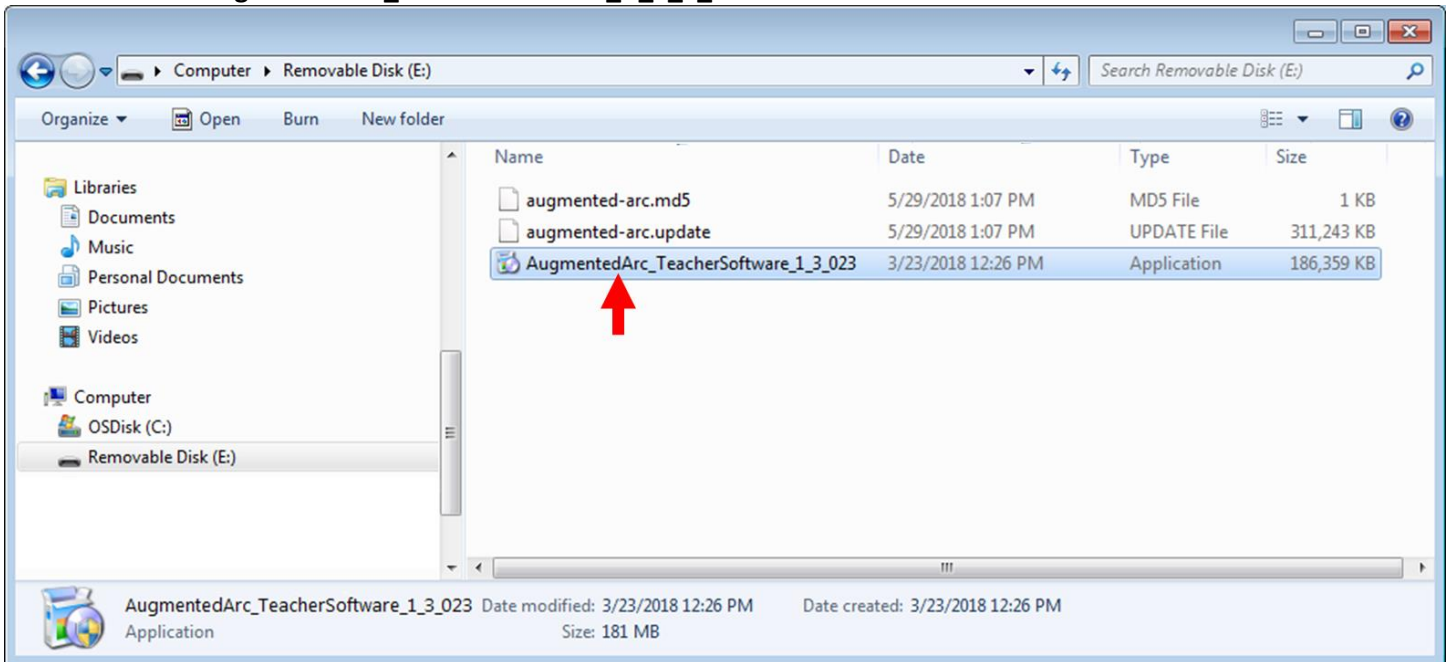
The extraction process will then begin and may take a few minutes.

The USB drive will then contain 3 files as shown below:

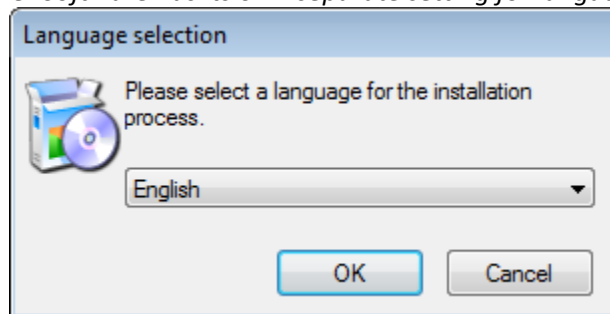


Step 2: Install the Latest Teacher Software on Your PC

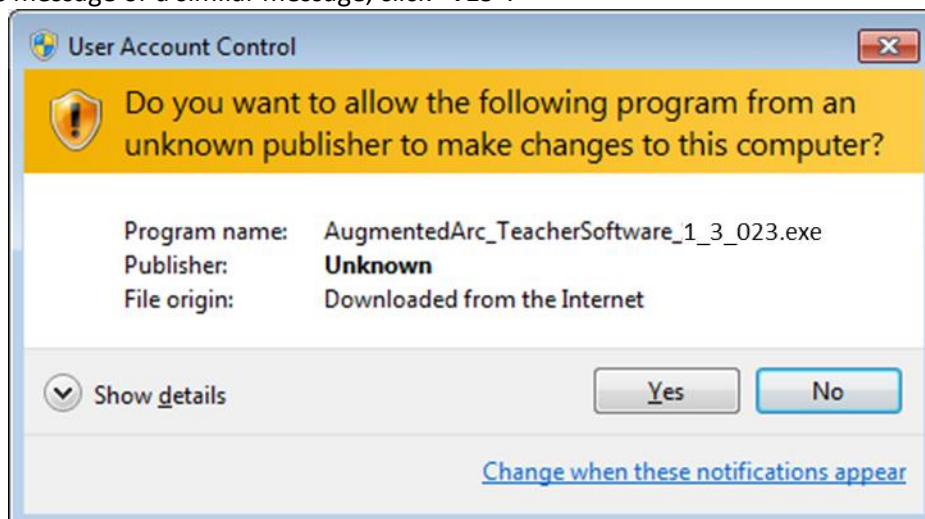
Double click the **AugmentedArc_TeacherSoftware_V_1_3_023.exe** file.



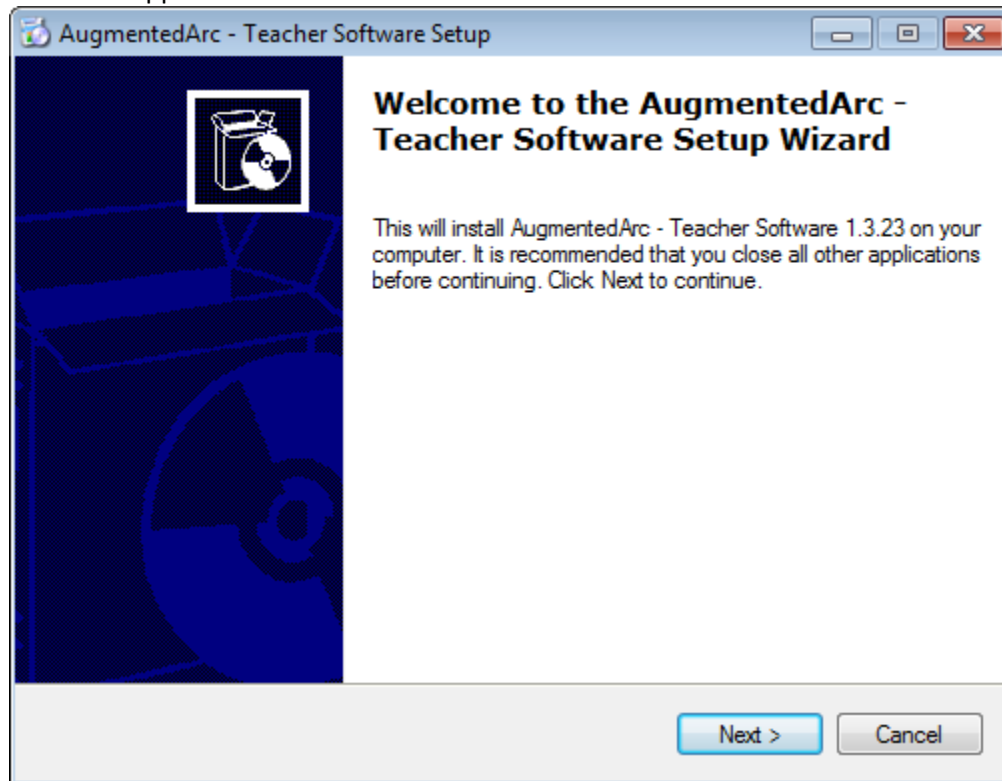
Select the desired language for the installation process. *Note: This selection only affects the language displayed during the installation process. The Teacher Software has its own separate setting for language.*



If prompted with this message or a similar message, click "YES".



The installation window will appear.



Click **Next**. Continue with the installation process, including the license agreement screen. After a successful installation, shortcuts for the Teacher Software will appear on your desktop and Windows taskbar.

Step 3: Install the Latest Simulator Software on the Simulator

STANDALONE MODE

If your AugmentedArc™ system is setup in Standalone Mode (as is usually the case if you only have one system), follow these instructions. Otherwise, skip to [page 11](#).

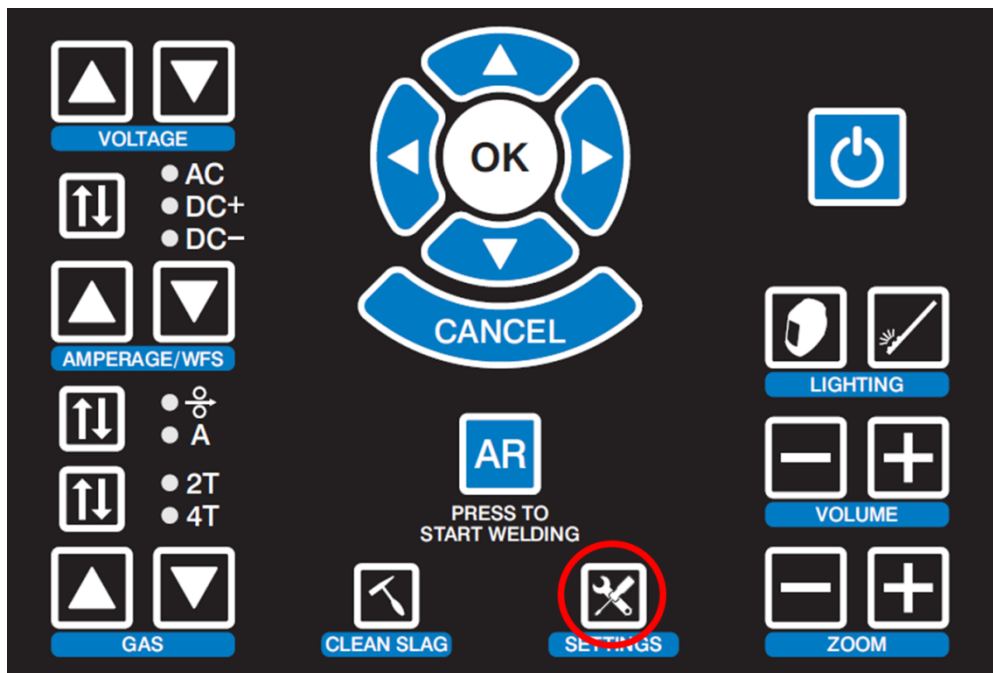
Plug the USB drive into the USB port located in the back of the AugmentedArc™ Simulator.



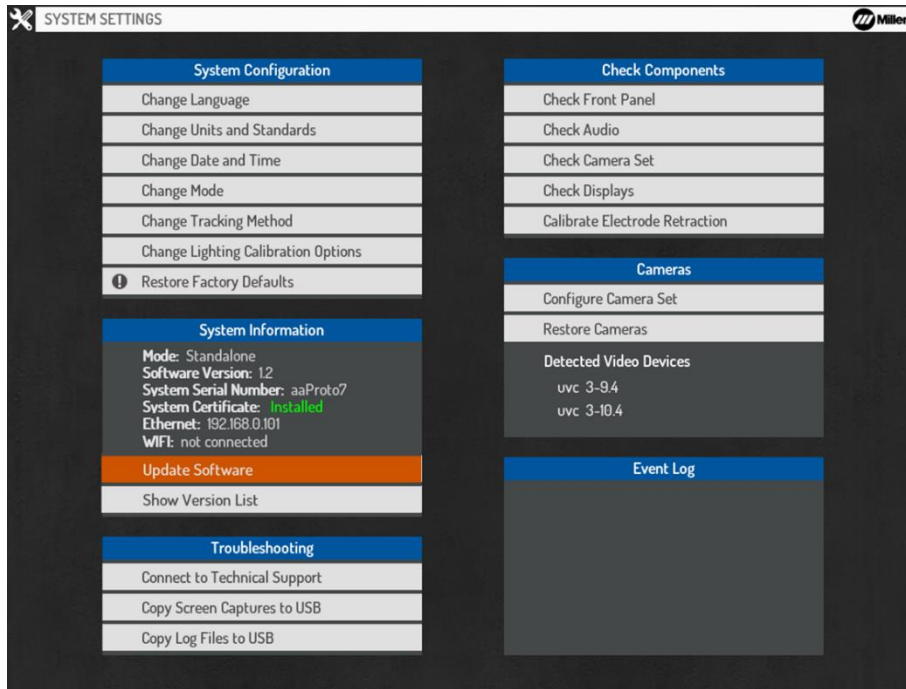
Login as an instructor. Unless it has been changed, the default instructor login is:

- User Name: Admin, Admin
- Password: 1111

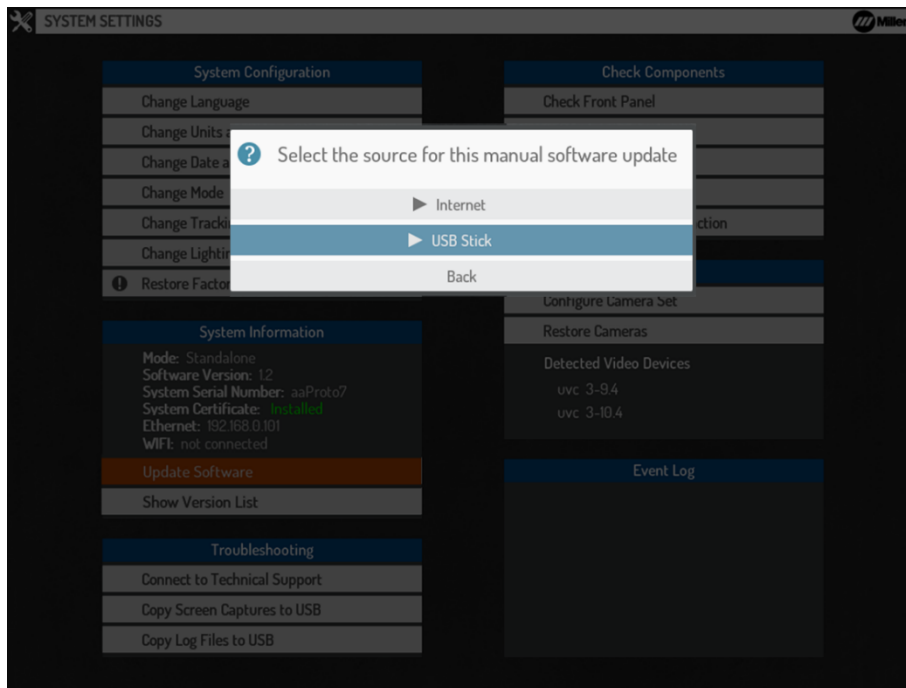
Press the “**SETTINGS**” button shown here:



Select the “Update Software” option.



Select the “USB Stick” option.



There will be a short pause as it loads the files from the USB drive. You will then see a message “Installing the new updates. AugmentedArc™ will reboot when finished...” The process of installing the updates and rebooting the system usually takes about 2 minutes.

Skip to [Verifying the Update](#) on page 12.

CLASSROOM MODE

If your AugmentedArc™ system is setup in Classroom Mode (as is usually the case if you have more than one system), follow these instructions:

Power down the controller AND all connected AugmentedArc™ simulator systems.

Plug the USB drive into a **black** USB port located in the back of the controller (the blue USB ports are USB 3.0 and may not work).



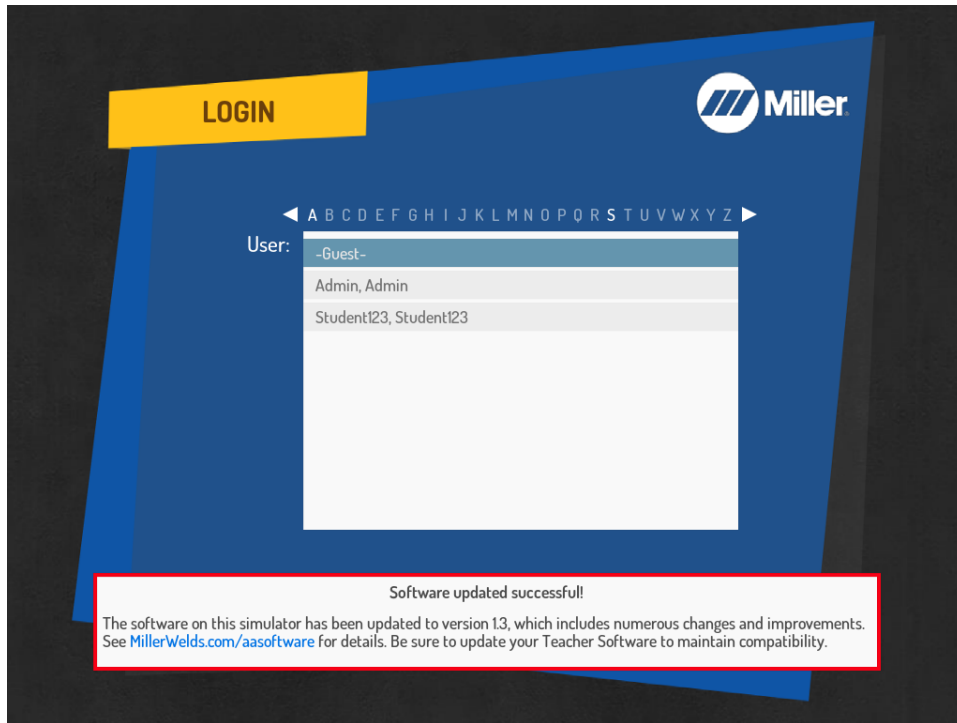
Press the power button to turn on the controller.

After the controller boots up, it will automatically install the software update. Wait about 5 minutes for this process to complete.

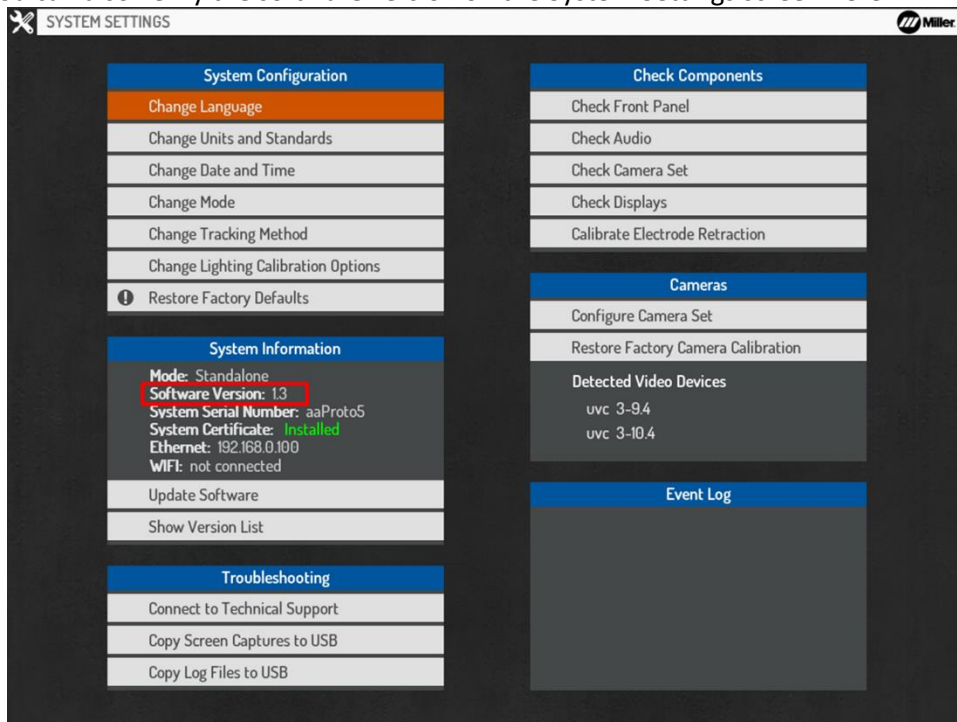
Reboot each of the AugmentedArc™ simulators that are part of the Classroom Mode network. Each simulator will automatically be updated to the new version of software installed on the controller.

Step 4: Verifying the Software Update

When the simulator boots up for the first time after the software update, you should see a message on the login screen as shown here:



On the Simulator, you can also verify the software version on the System Settings screen here:



If you encounter any difficulties during the software update process, feel free to contact Miller technical support at (866) 931-9730 (option 3) or email our education products support team at education@millerwelds.com.